

MONTHLY MEMBERSHIP PROGRESS REPORT

LOCATION WASHINGTON

District 19 G

Results as of: 6/30/2023

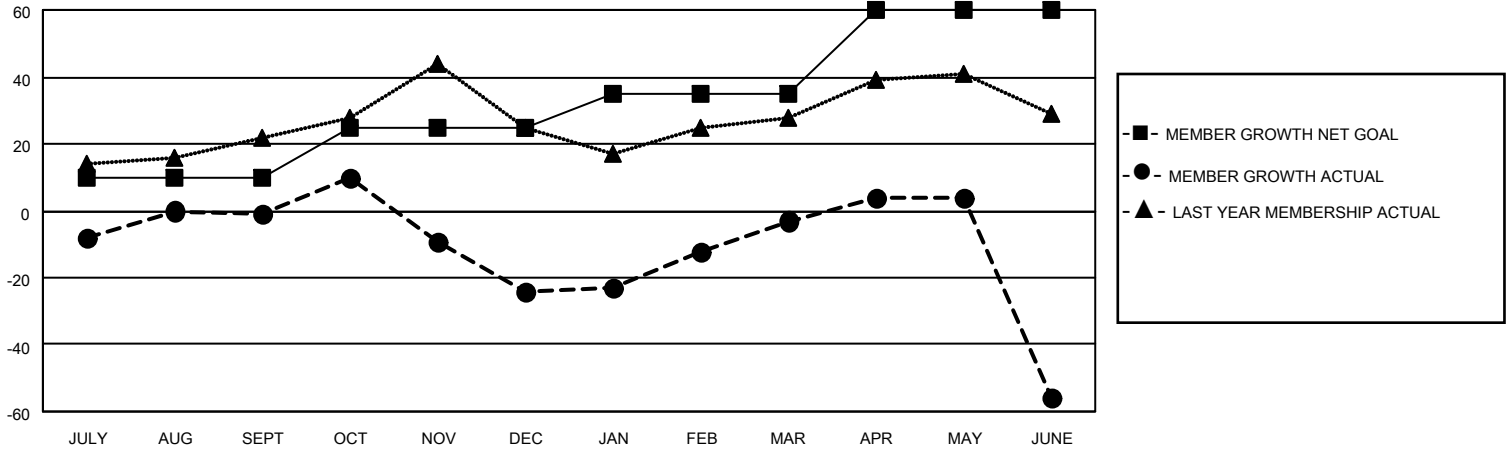
Clubs			
RESULTS FOR 2022-2023			
QUARTER	NEW CLUB GOAL	NEW CLUBS	DROPPED CLUBS
JULY/AUG/SEPT	0	0	0
OCT/NOV/DEC	1	0	0
JAN/FEB/MAR	0	0	1
APR/MAY/JUNE	1	0	0

Members			
RESULTS FOR 2022-2023			
QUARTER	MEMBER GROWTH NET GOAL	MEMBER GROWTH ACTUAL	DROPPED MEMBERS ACTUAL (including transfers)
JULY/AUG/SEPT	10	33	33
OCT/NOV/DEC	15	36	56
JAN/FEB/MAR	10	50	19
APR/MAY/JUNE	25	39	88

GOALS AND ACTUAL NEW CLUBS CUMULATIVE



GOALS AND ACTUAL MEMBERS CUMULATIVE



DROPPED CLUBS: 1

27 CLUBS OF 38 ADDED 1 OR MORE NEW MEMBERS

GENDER DISTRIBUTION

MALE	695 (59.20%)
FEMALE	479 (40.80%)
NON BINARY	0 (0.00%)
PREFER NOT TO ANSWER	0 (0.00%)

DROPPED MEMBERS

[CLICK HERE FOR CUMULATIVE MEMBERSHIP DATA](#)

DECEASED	21
CLUB CANCELLED	0
OTHER	175
TOTAL	196

TOTAL FAMILY UNIT MEMBERS 318

FAMILY MEMBERS PAYING HALF DUES 162